
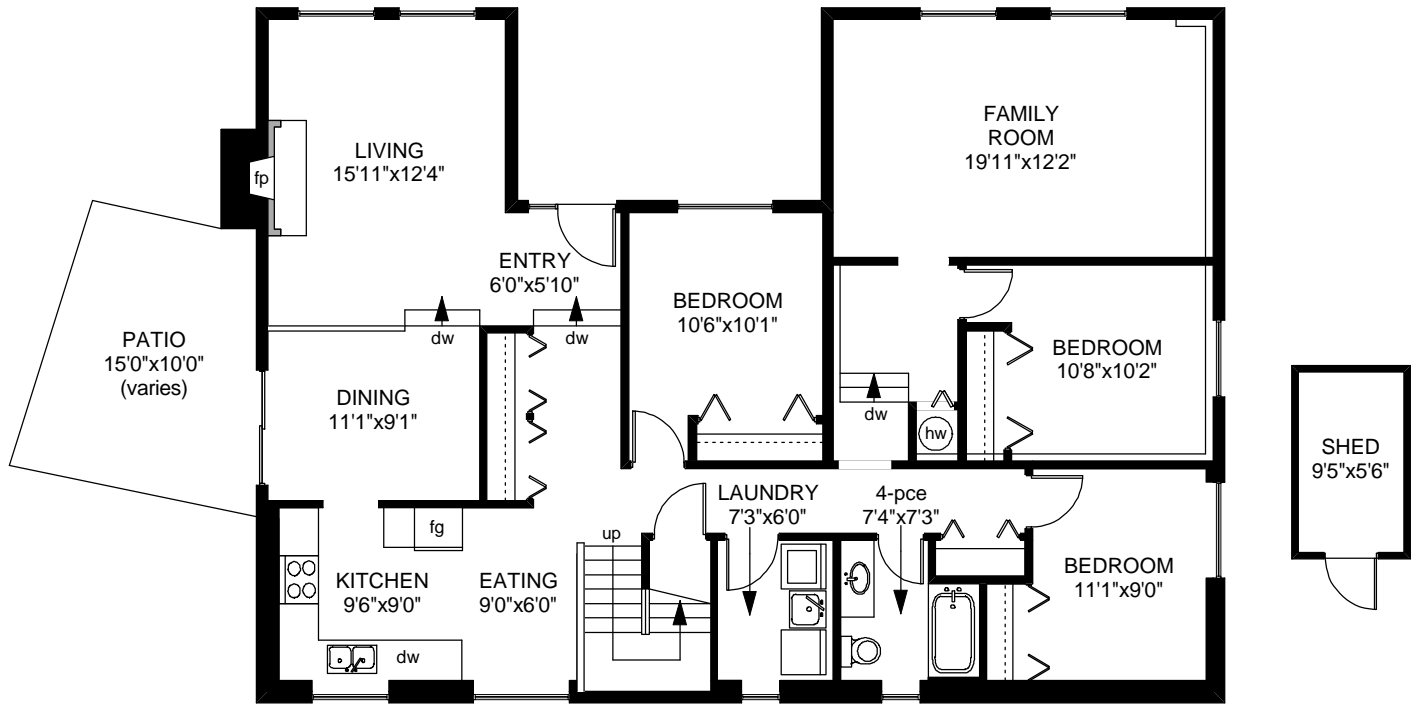

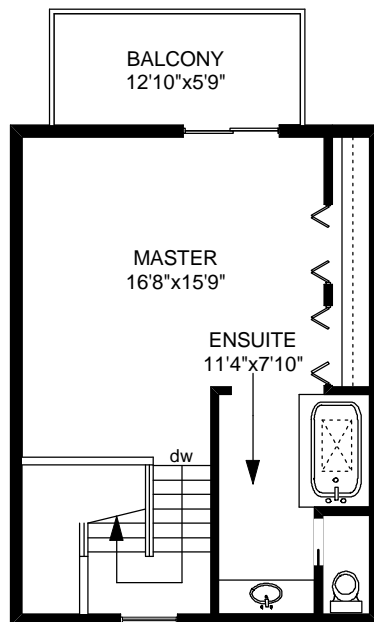



# 3383 ST TROY PLACE

 **FIRST FLOOR**  
753 SQ.FT

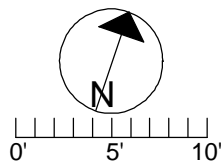


 **SECOND FLOOR**  
925 SQ.FT



 **THIRD FLOOR**  
473 SQ.FT

	FINISHED SQ. FT.	UNFINISHED SQ. FT.	TOTAL SQ. FT.
FIRST	753	0	753
SECOND	925	0	925
THIRD	473	0	473
<b>TOTAL</b>	<b>2151</b>	<b>0</b>	<b>2151</b>
PATIO	0	157	157
BALCONY	0	81	81
SHED	0	62	62



PREPARED FOR THE EXCLUSIVE USE OF  
DAVE PHILPS OF DFH REAL ESTATE

MEASURED ON: 06/08/10  
DRAWING FILE: 08443

**Taf** **M** **measure** VICTORIA, B.C.  
Ph. 883.8894  
www.tafemeasure.com